

# Autodesk Integration

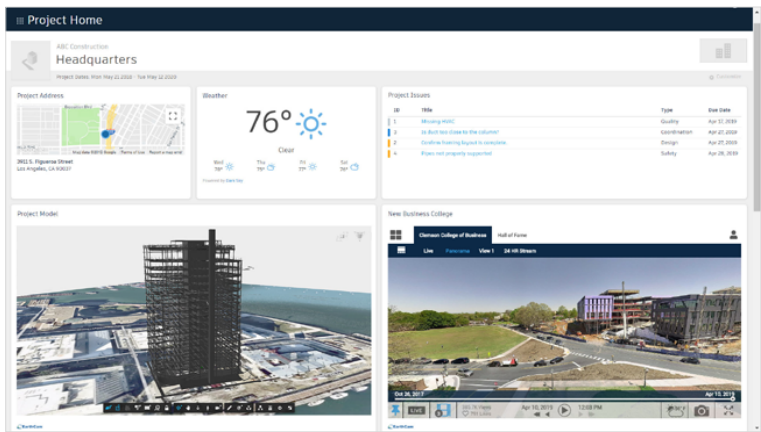


Merge Images & Intelligence, Gain New Perspective



# Next-Level Integration for Visual Information

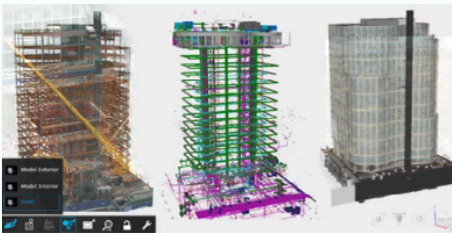
Merge real-time webcam imagery with Autodesk platforms to create new intelligent perspectives of jobsites. Combine high-quality construction cameras and 360° VR imagery into Autodesk's common, smart platform. Generate a cohesive library of live and saved imagery in relation to your Autodesk 3D Model.



## 360° Walkthroughs

3D/4D Modeling

EarthCam, the leader in webcam technology, and Autodesk, a leader in 3D design, engineering and entertainment software, provide a powerful solution by integrating high-quality construction cameras and 360 VR imagery into a common, smart platform.



### View Builder Control Interface

Customize, create and save different layered views within the Forge Viewer. Superimpose images and video over your choice of 3D model layers. Drill down into layers and model branches to select the exact 3D model components to incorporate with your imagery. Quickly present the most relevant model layers with real-time video to support daily reports. Prove that milestones have been reached by using merged images and model layers to show as-built conditions.



VR Dollhouse views are created by merging 360° photo content with Navisworks or Revit models for a new way to walk the jobsite. Previously, generating these views required time consuming and expensive scans. Quickly assess jobsite progress, resolve disputes and communicate with stakeholders using remote fly-through navigation and gamified controls. Increase the value of your 360° photography, by accurately incorporating it with 3D models.



### AI Image Capture Alignment

Upload your 3D models to EarthCam and have all your webcam images and live camera assets automatically overlaid and aligned. Precisely integrate your 3D models with webcam, 360° VR, drone, map and video content. Access powerful media-enhanced views of your Autodesk Build projects and create a cohesive library of live and saved imagery in relation to your 3D model. Markup images to share detailed observations or create a time-lapse to highlight progress.



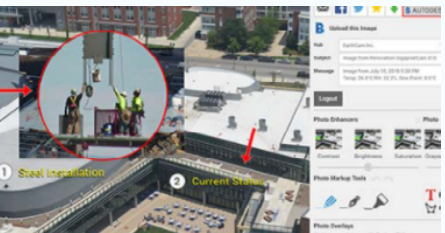
### Partner Card Integration

Access your live jobsite cameras, time-lapse movies and EarthCam-infused Autodesk Build models as part of EarthCam's new Partner Card. Use versatile and cross-platform content to support a lean construction environment. Virtual Design and Construction (VDC) teams can leverage EarthCam cameras already on the jobsite for greater insight into the project process using real-time media.



### Compare As-Built to As-Designed Conditions

View your EarthCam jobsite cameras and imagery in relation to 3D models including Autodesk Navisworks and Revit. Perform as-built to as-designed image comparisons and execute measurement functions between webcams images, 2D plans or 3D models.



### Share Media from your Camera to Autodesk

Deliver webcam, 360° VR photography and video content to Autodesk Build hubs for a media-enhanced view of any project. Augment RFIs with objective, photographic evidence. Push images directly to an RFI in either Draft or Open status so contextual data or annotations can be added before it is sent to the reviewer.



To find more about Autodesk Integration,

1-800-327-8422 | [Sales@EarthCam.com](mailto:Sales@EarthCam.com)

